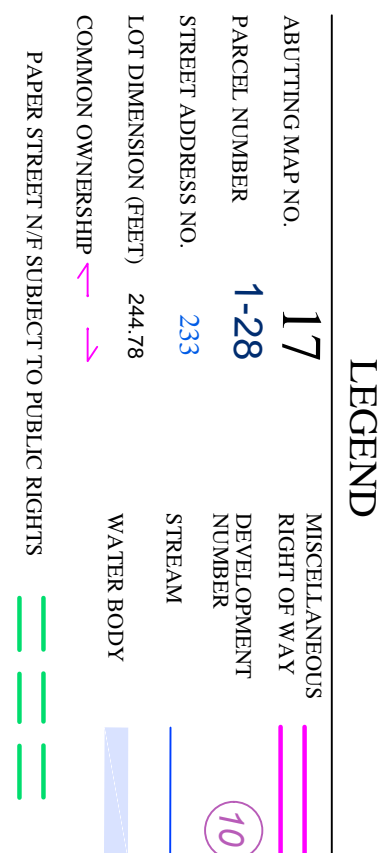


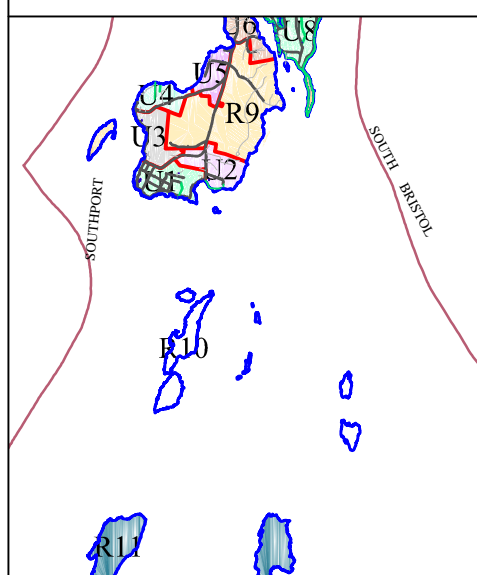
## MAINE



## LEGEND

REVISED TO APRIL 1, 2018  
FOR ASSESSMENT PURPOSES ONLY  
NOT FOR PROPERTY CONVEYANCE  
OR EASEMENT & CR DEFINITION

John E. O'Donnell & Associates  
632 Bald Hill Road  
New Gloucester, Maine 04260  
[www.jeodonnell.com](http://www.jeodonnell.com)



R-10

